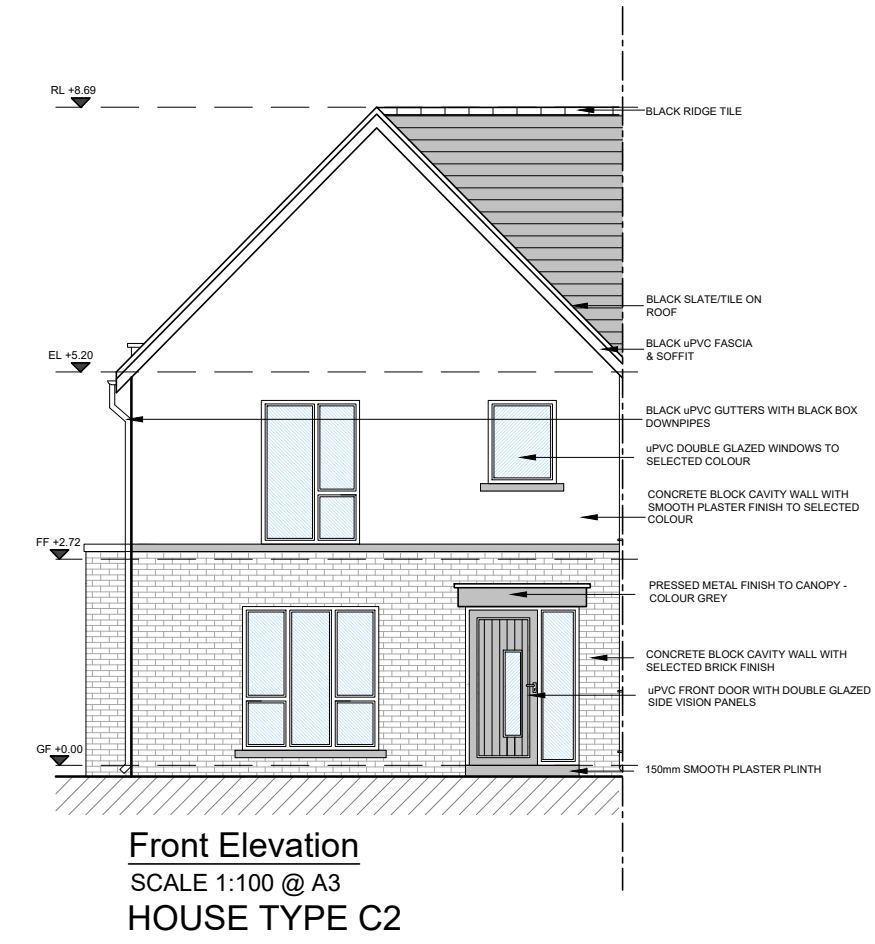
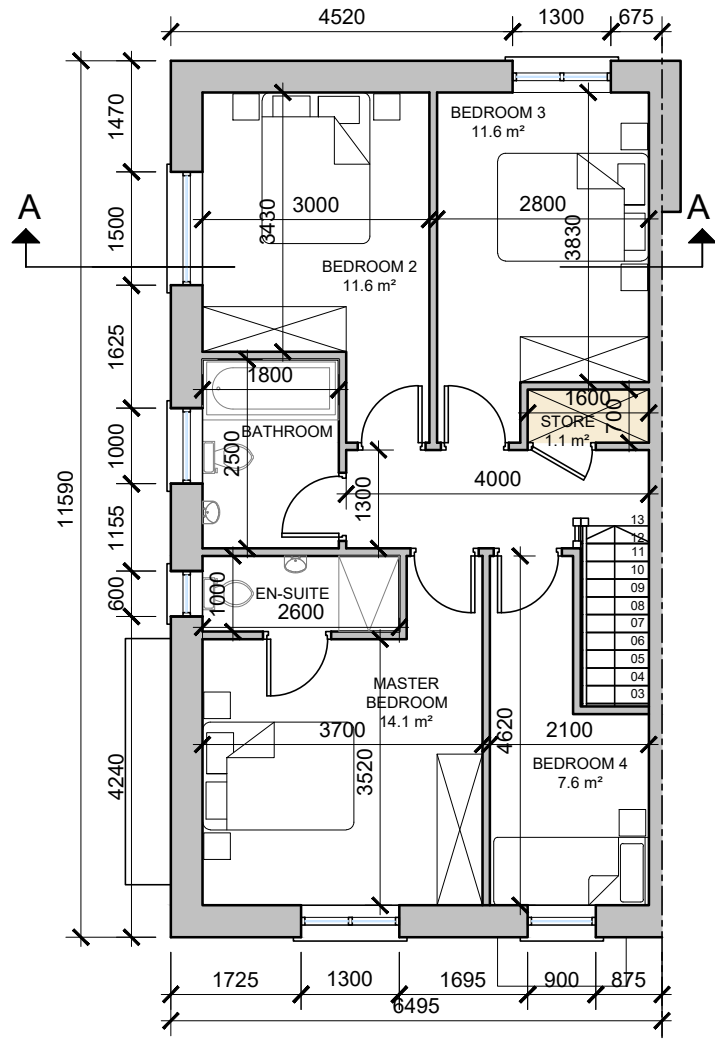
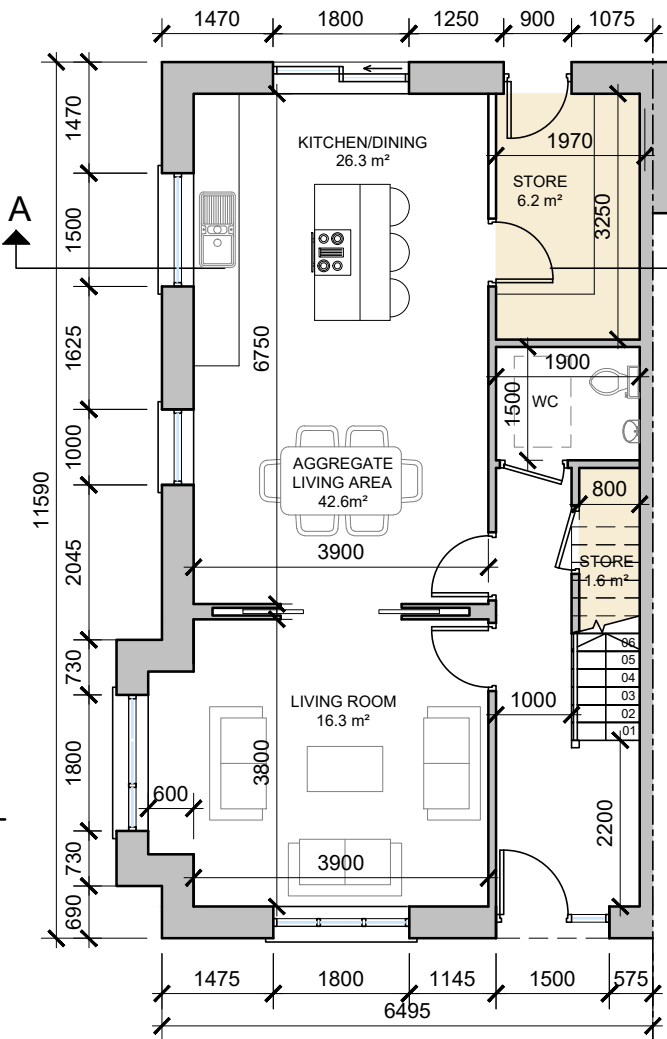


House Type C2

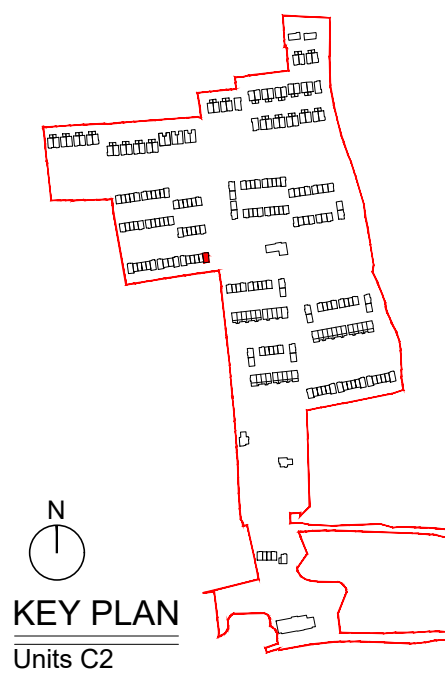
4-bed End Townhouse (7 person)

AREA: 128.3 SQ.M.
1,381 SQ.FT.

STORAGE total - 8.9 sq.m.

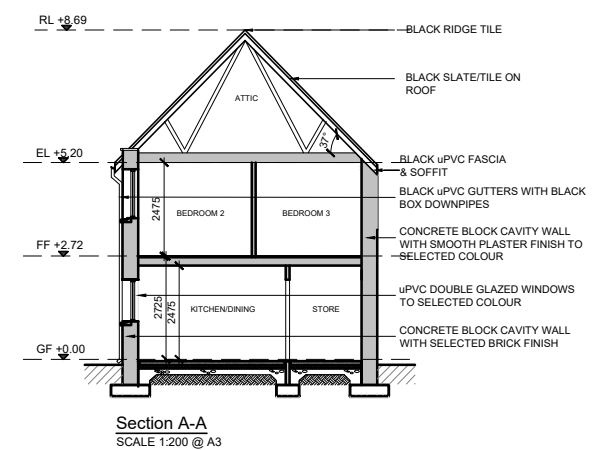
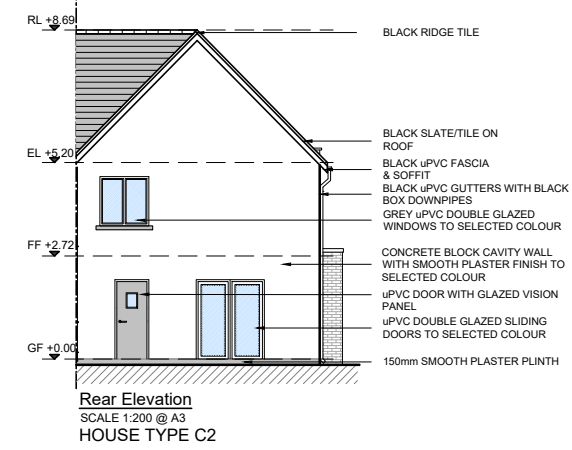
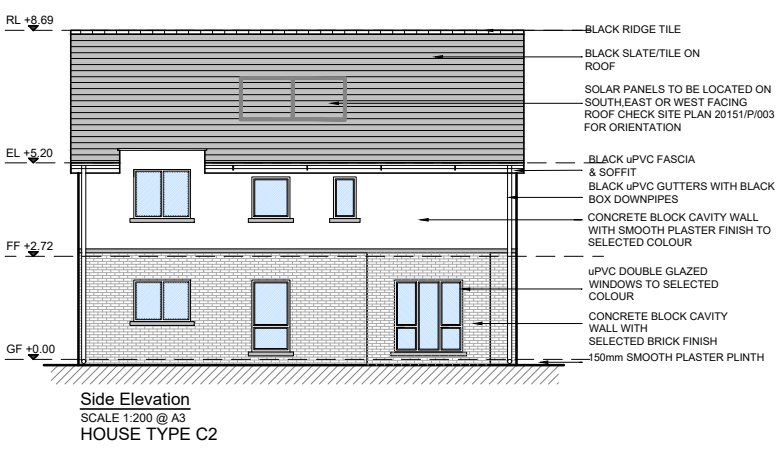


DO NOT SCALE. WORK TO FIGURED DIMENSIONS ONLY. ALL EXISTING DIMENSIONS TO BE CHECKED ON SITE. DRAWN ON AUTOCAD R2004 AT DEADY GAHAN ARCHITECTS LTD. LAYERS ON THIS DRAWING COMPLY WITH BS 1192: PART 5

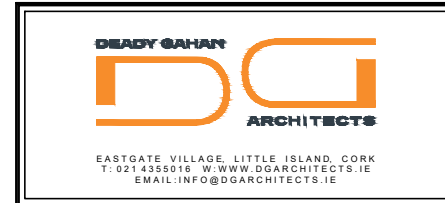


NOTE: POSITION OF NORTH POINT & LEVELS VARY. SEE SITE PLAN FOR ORIENTATION - DWG NO. 20151/P/003

House Type C2 - Character Area 2
See site plan (dwg no. 20151/P/003) for material locations



date	rev	name	chk	note
12.07.21	P1	KM	EJG	ISSUE FOR PLANNING



Project
PROPOSED RESIDENTIAL DEVELOPMENT
AT TOWNLAND OF LACKENROE, GLOUNTHAUNE, CO CORK

Drawing title
HOUSE TYPE C2- 4 BED TOWNHOUSE
PLANS, ELEVATIONS & SECTION A-A

Scale	Drawn	Checked	Date
1:100/1:200 @ A3	PC	EJG	02.07.21

Project No.	Dwg. No.	Revision
20151	20151/P/302-CA02	P1

Information / Comments	Tender
<input type="checkbox"/> Planning <input type="checkbox"/> Construction	<input type="checkbox"/> Tender <input type="checkbox"/> Construction